

Linking Ecosystem Services, Landscape Preferences and Human Well-being: a Case-study from Belarus

Alena Shushkova – Scientific and Practical Centre for Bioresources of National
Academy of Sciences of Belarus

Marine Elbakidze – School for Forest Management, Faculty of Forest Sciences,
Swedish University of Agricultural Sciences

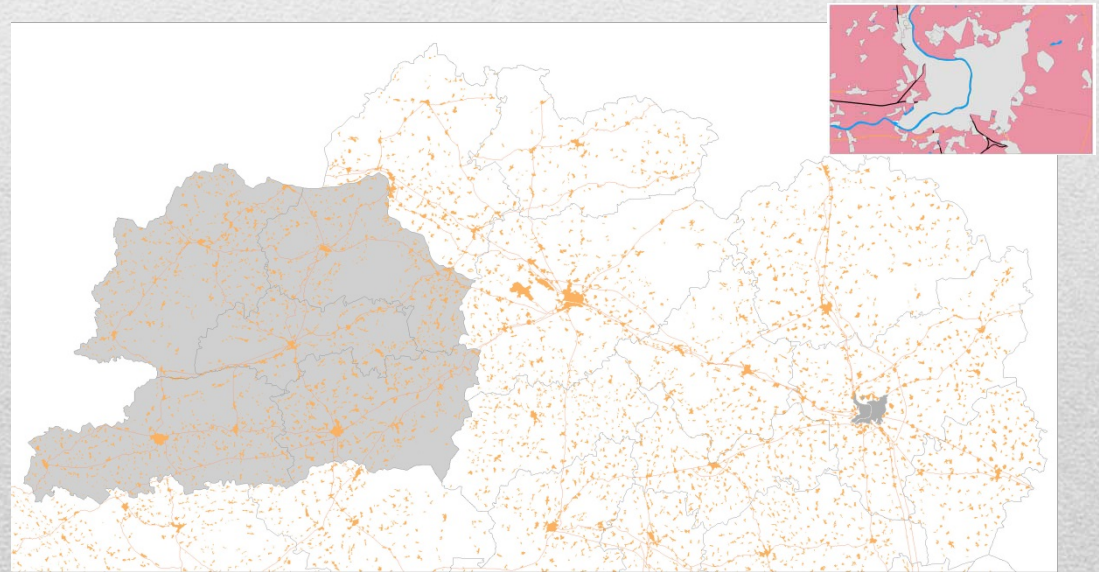
MOSCOW, 19-20 November 2019

Aim of Research

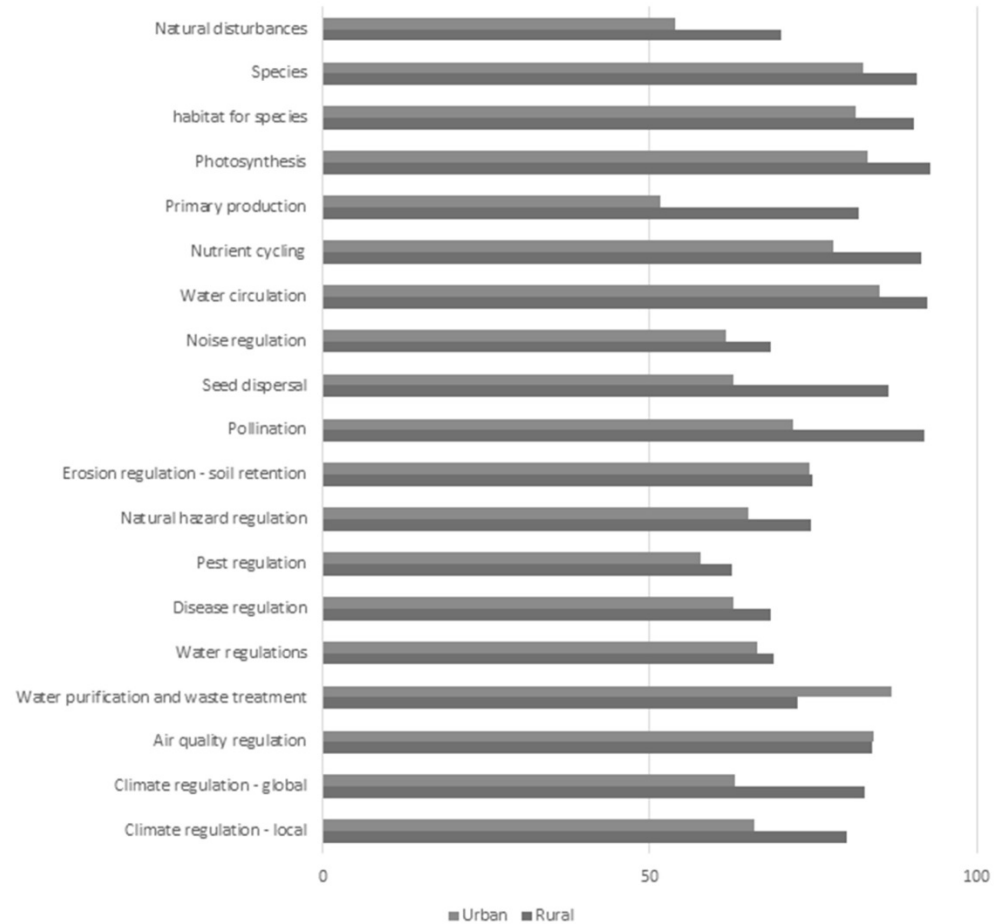
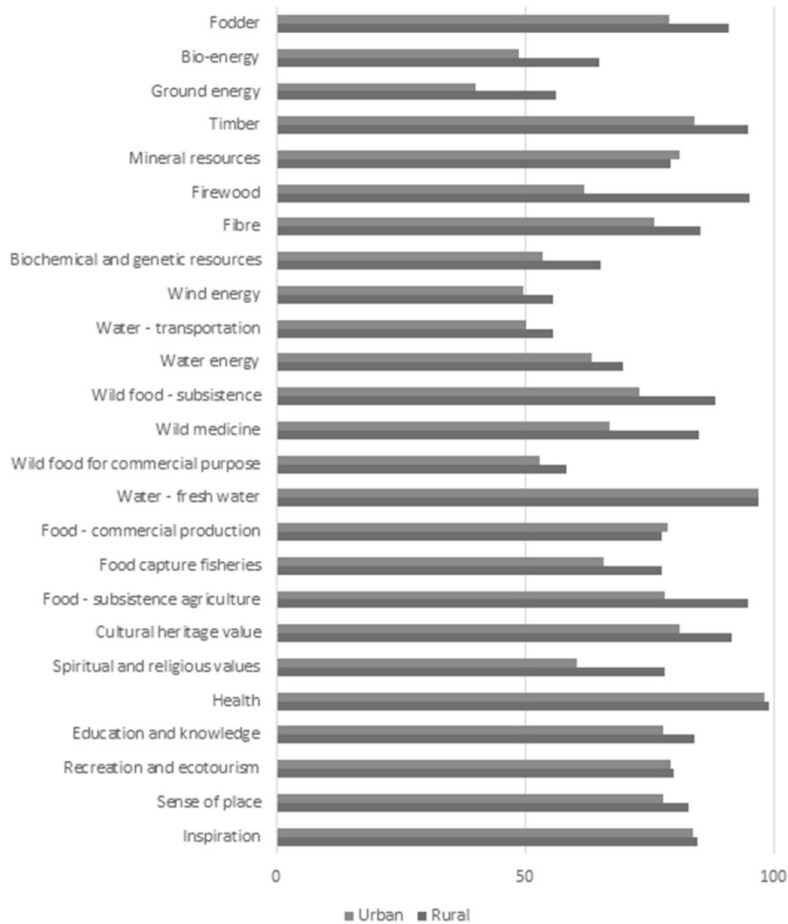
- To find out the **preferences of residents** on ecosystem services (ES),
 - identify landscapes that provide multiple ES important for human wellbeing in Belarus
 - and how people correlate these landscapes with the delivery of ES important for their wellbeing
-

Methodology

In total 403 interviews were done with urban and rural residents in 48 settlements in Vitebsk region



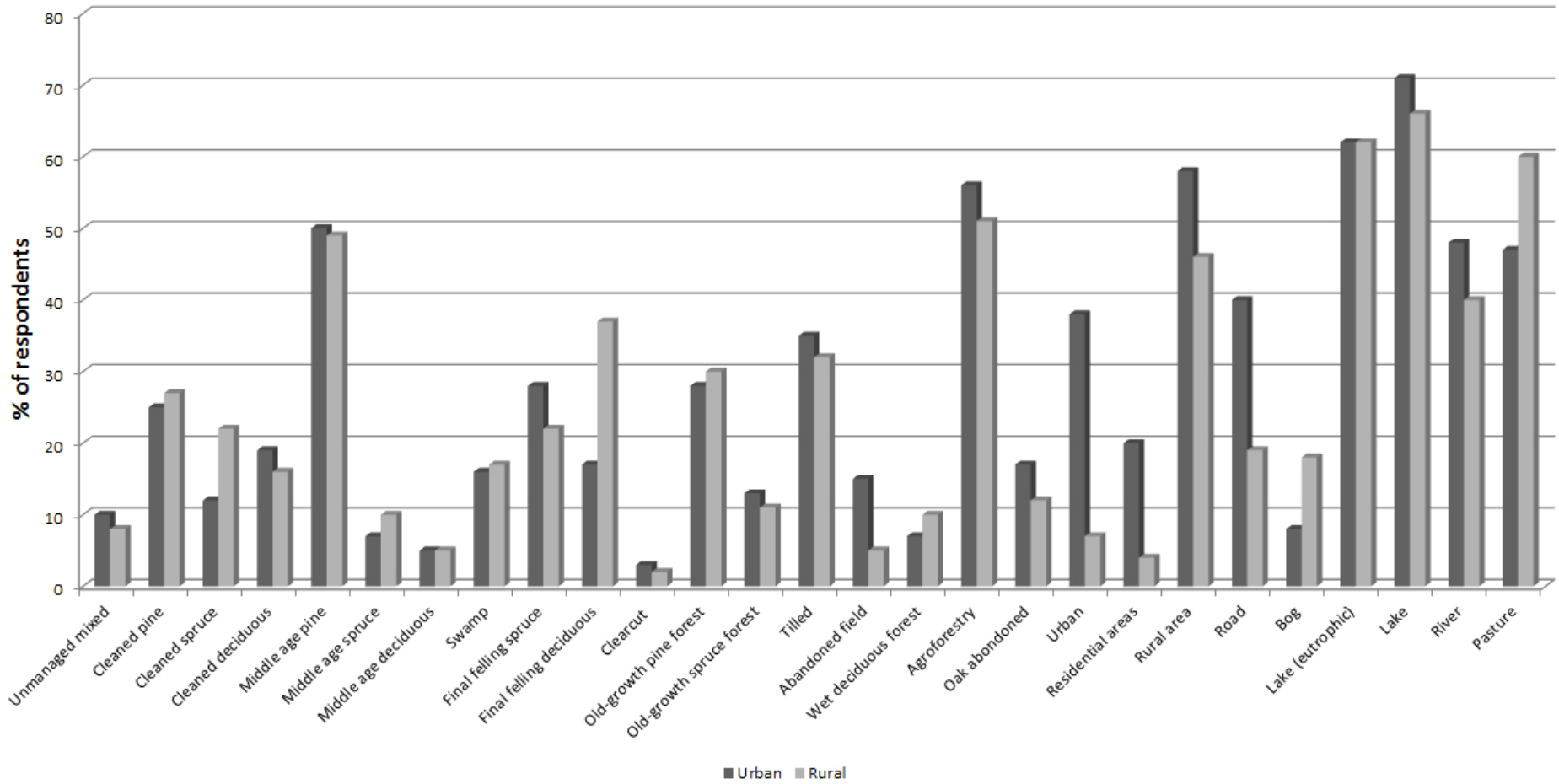
Results



Importance of benefits of landscapes for urban and rural respondents

on Belarusian project area

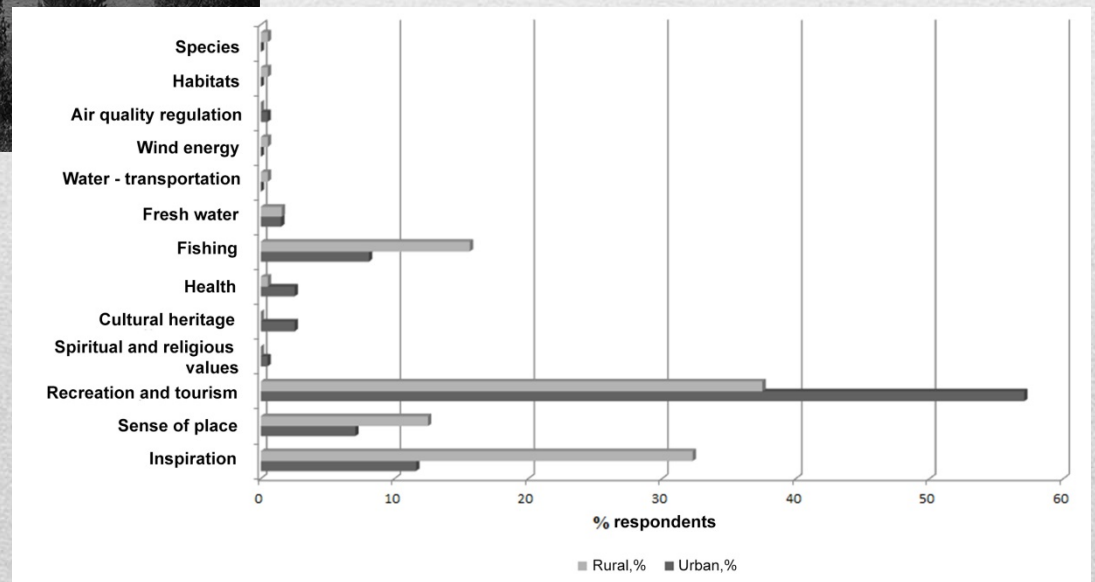
Results



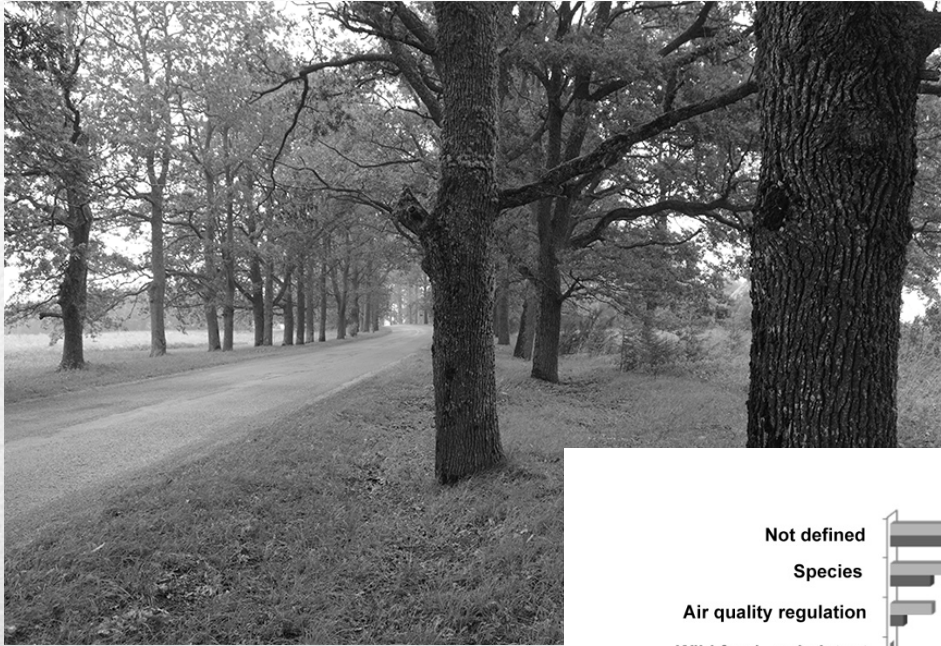
Lakes



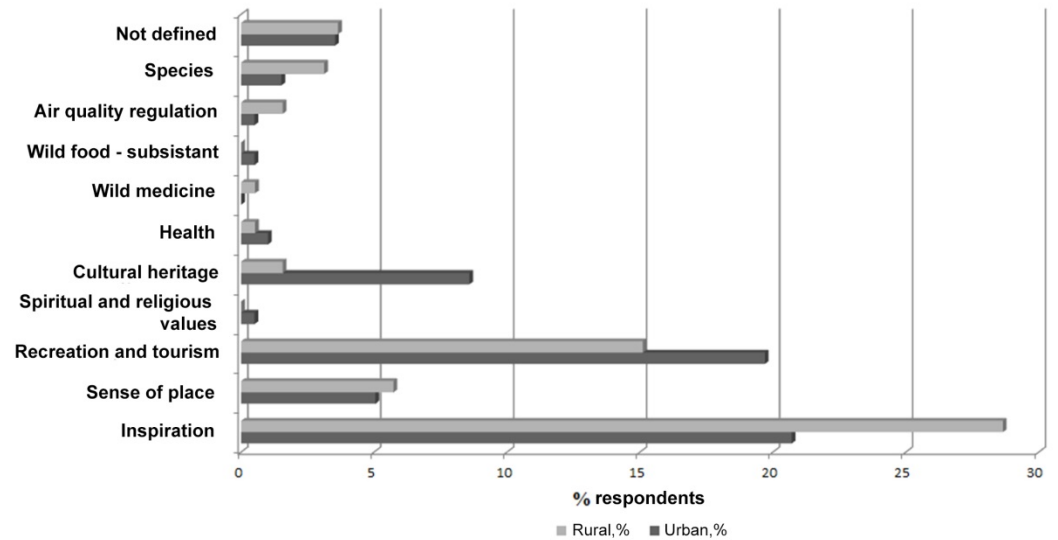
*selected by 71% urban respondents
and 66% rural respondents*



Agroforestry



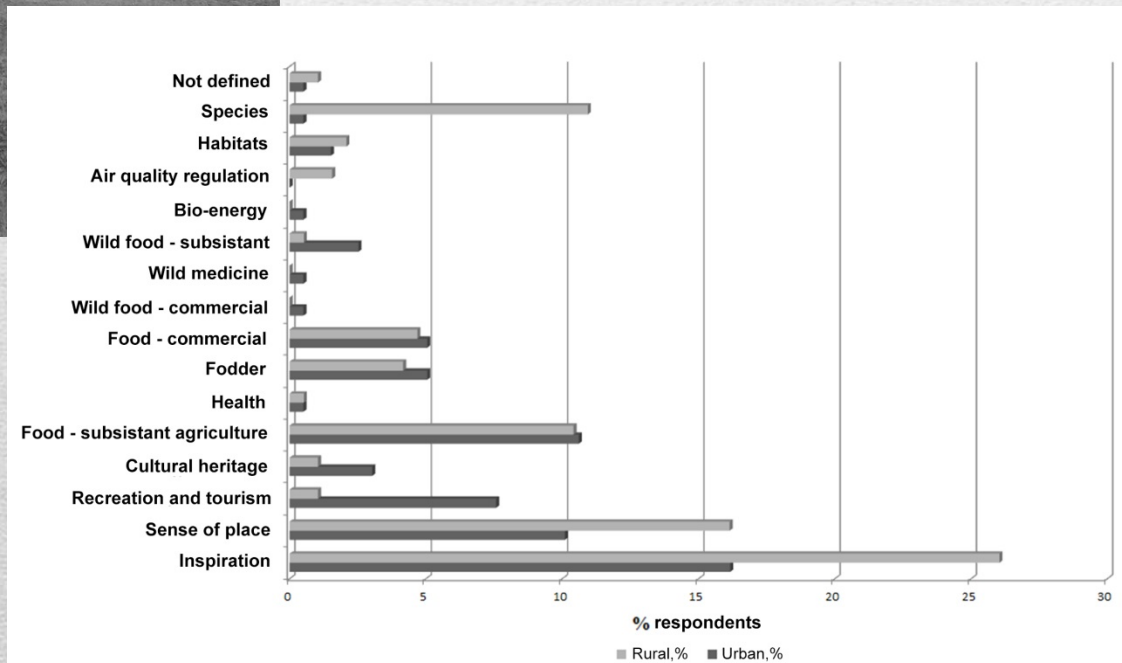
*selected by 56% urban
respondents
and 51% rural
respondents*



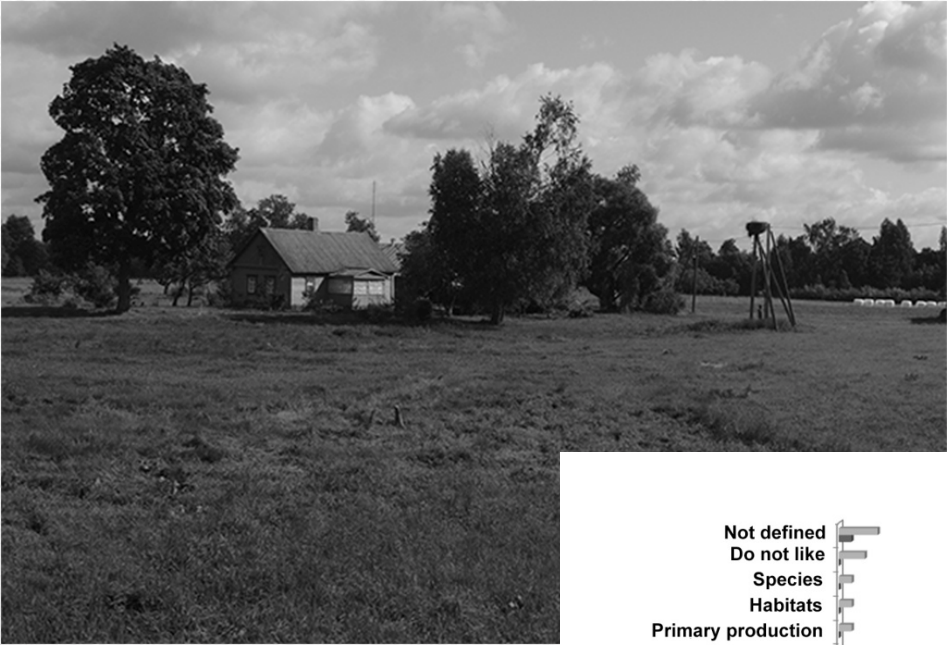
Pasture



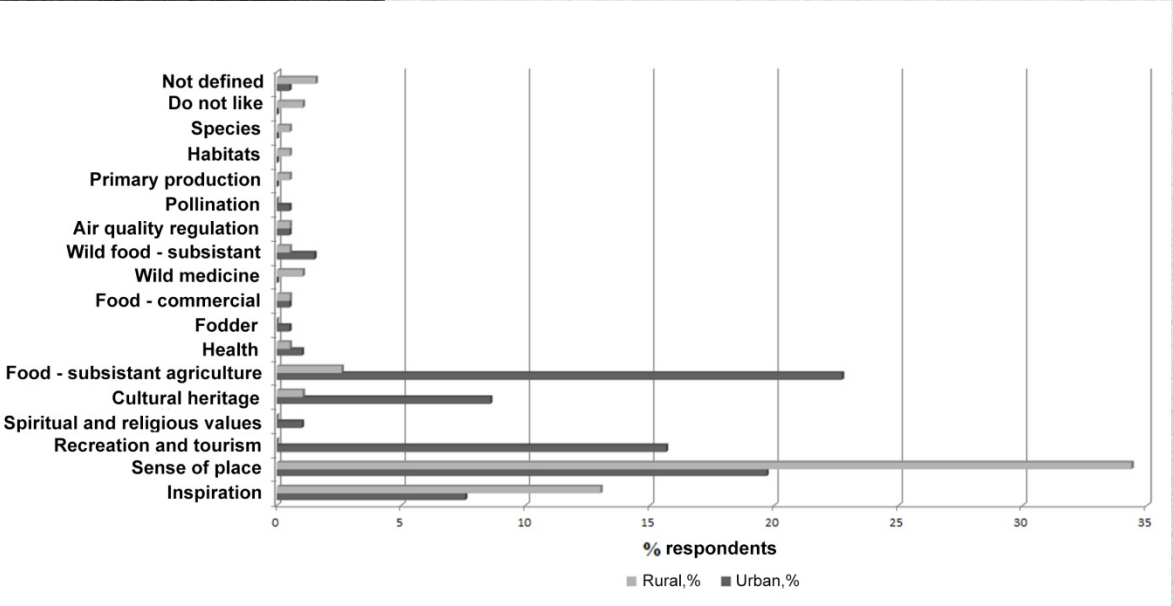
*selected by 47% urban
respondents and 60% rural
respondents*



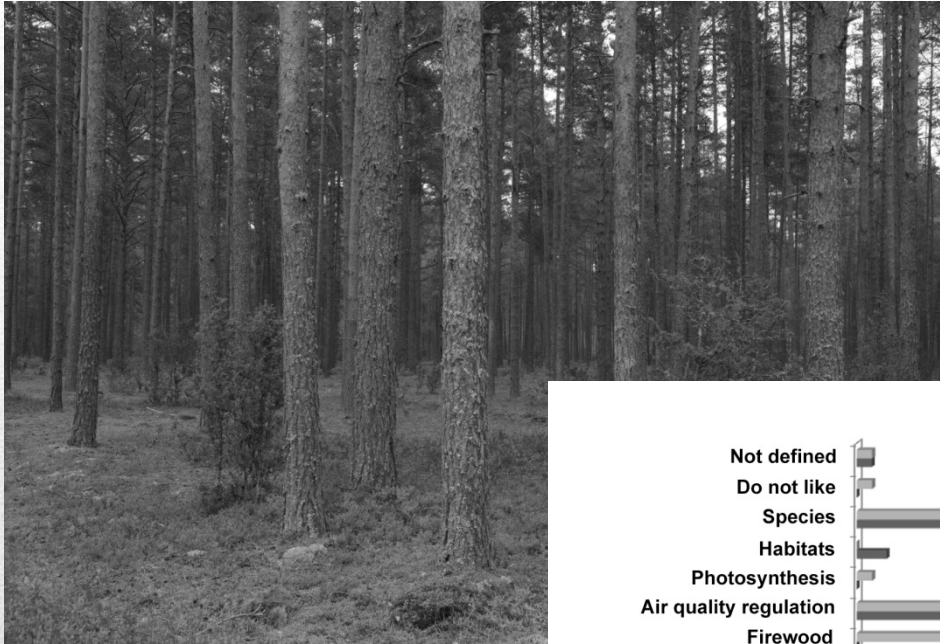
Rural Areas



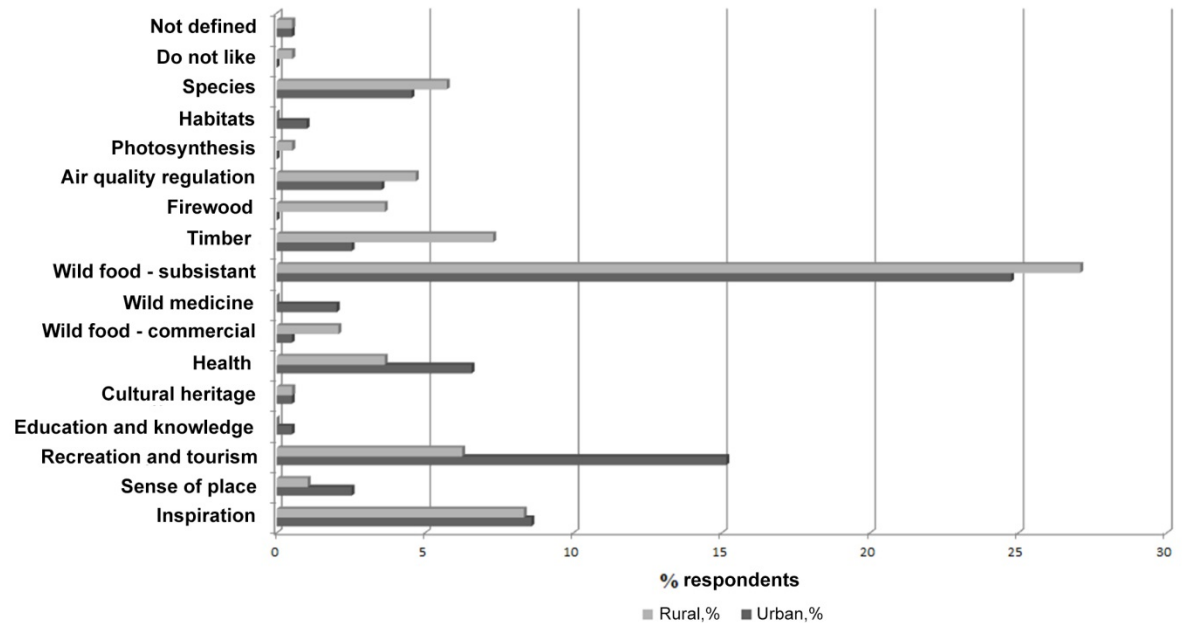
*selected by 58%
urban respondents
and 46% rural respondents*



Middle-age pine forest



selected by 50% urban respondents and 49% rural respondents

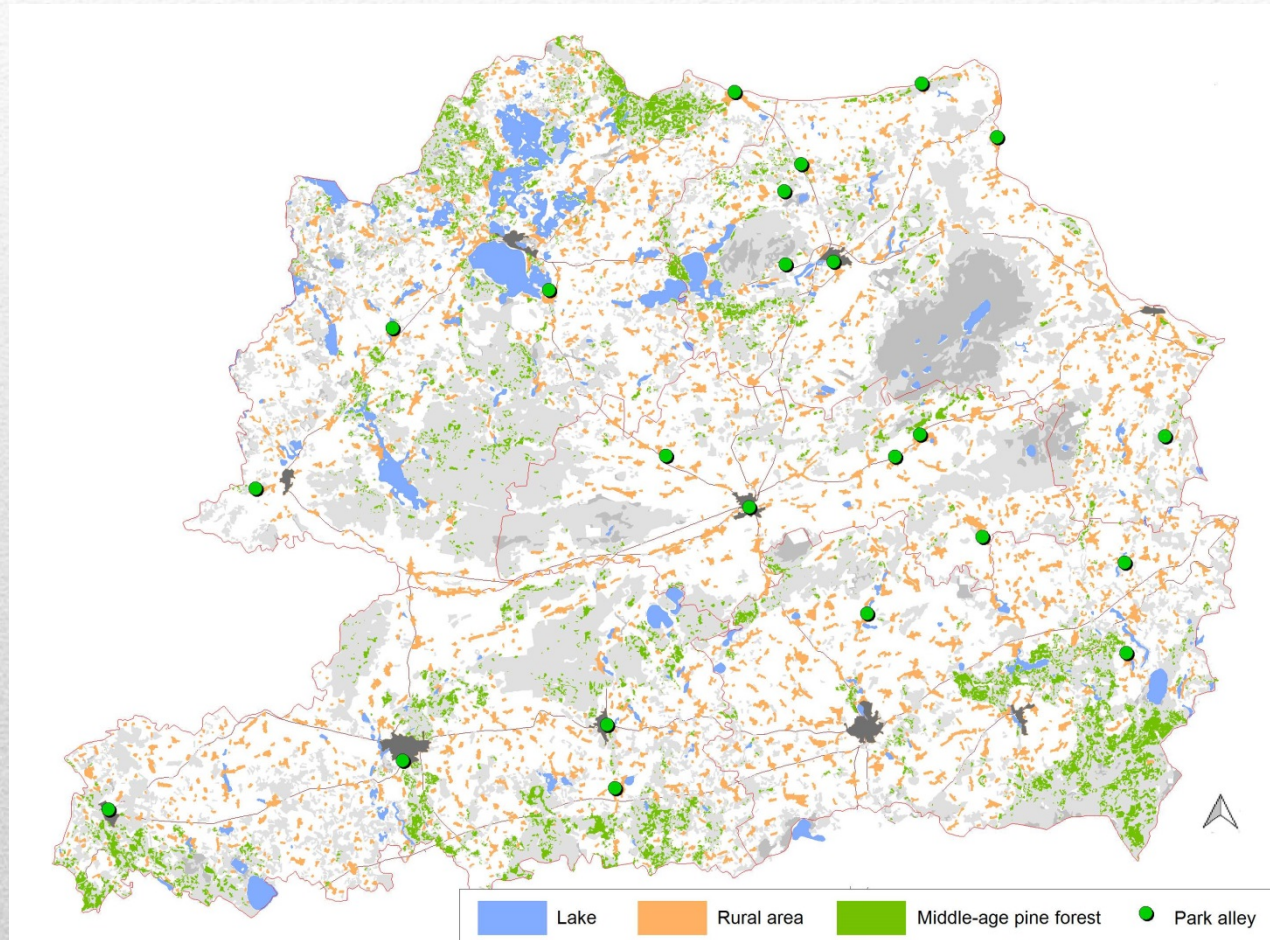


Undesired Landscape



selected by 43 % of respondents

Priority Land Covers in Project Area



Respondents' citations

RESPONSE

- wild food subsistence,
- fishery,
- dacha

- etc.



Nothing depends on me. Why do I need to care on climate changes?

In nature I only relax, do not use any resources

RESPONSE

- timber,
- hunting,
- garden for market,

- etc.

Conclusion

- Answers are often declarative (esp. regulating and supporting services);
 - Nature remained an important source of psychological comfort and health.
 - There is no big urban-rural gradient in opinions.
 - Public surveys help to understand the request existing in the society on ES delivered by specific landscapes. It can be used for adjusting local policies and planning of public services in the region.
-



Thank you for attention!
